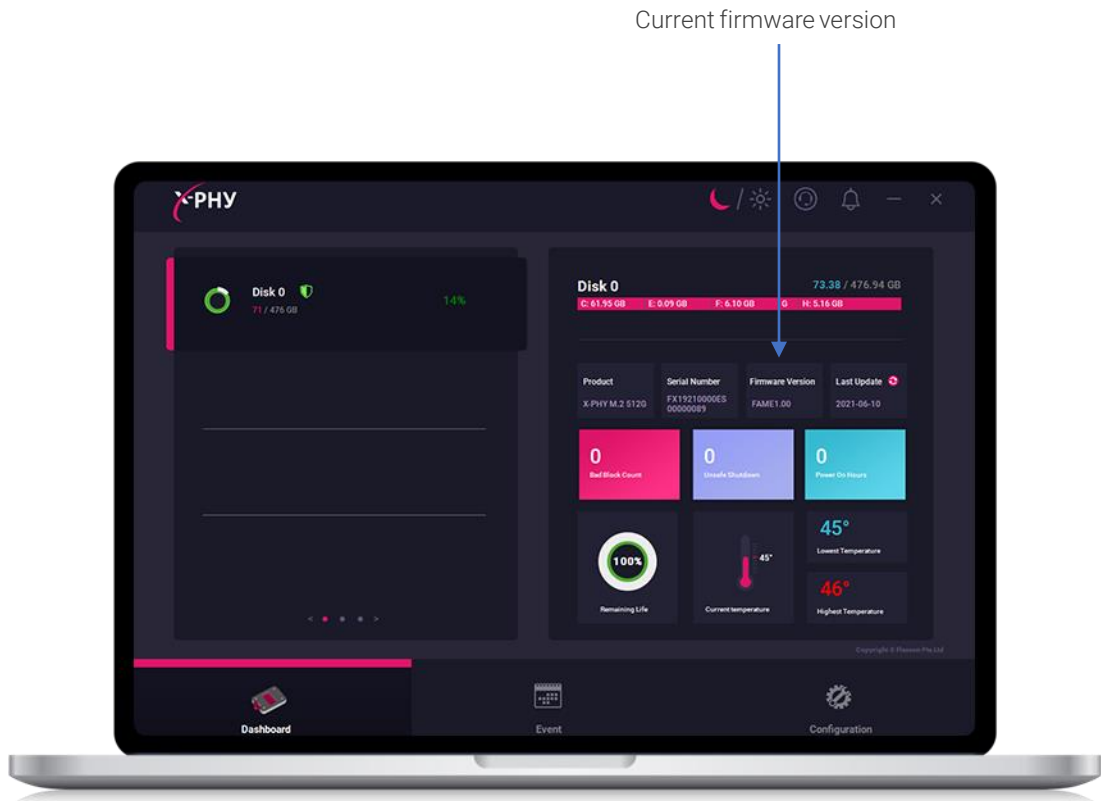


---

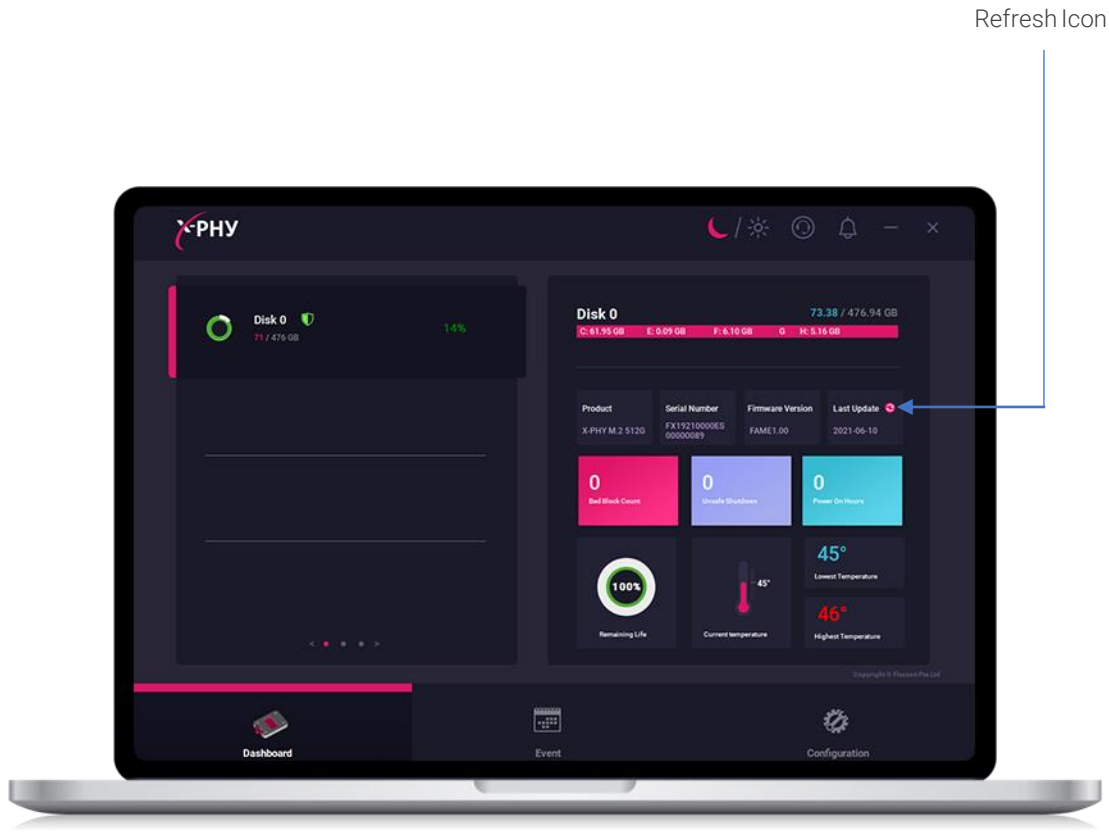
STEPS TO UPDATE  
FIRMWARE

**User Guide**

- 1 Open X-PHY® application Tool and check current firmware version

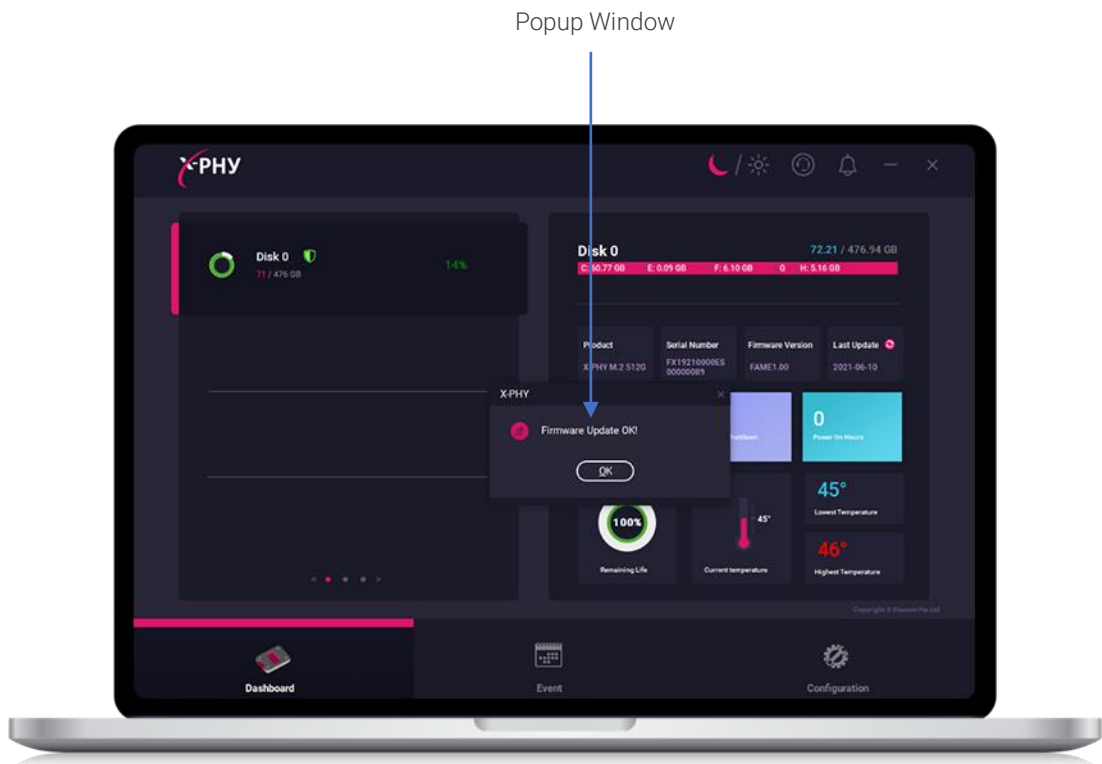


- 2 Press Firmware update refresh icon



Refresh Icon




- 3 Firmware will be updated and popup will be displayed



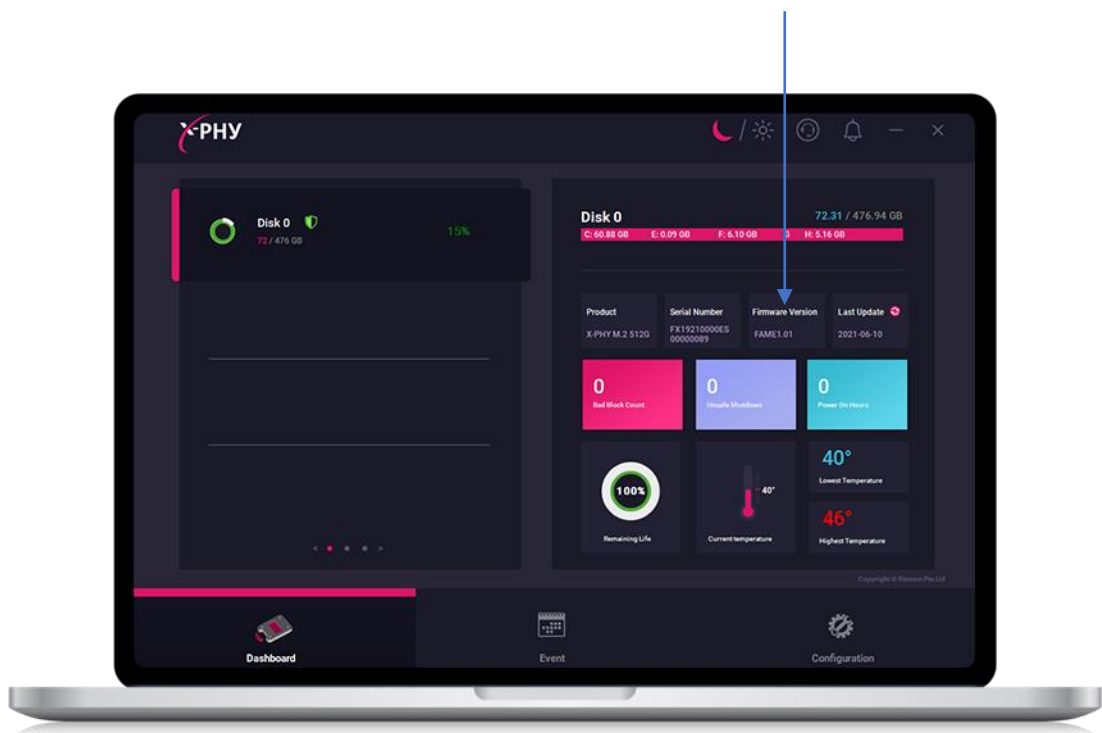
**Note:**

- I) For FW update, please connect XPHY via PCIe slot, not USB Adapter.
- II) The data stored in X-PHY SSD are remained after FW update.

# X-PHY® Firmware Update Guide

- 4 Shutdown  the PC, please don't reboot  the PC
- 5 Power ON  the PC and open the X-PHY® application and check the latest firmware version

Latest Version Firmware



- 6 Download and install new version of X-PHY Application Tool from below link:



[https://cdn.x-phy.com/wp-content/uploads/X-PHY\\_UserApplication.exe](https://cdn.x-phy.com/wp-content/uploads/X-PHY_UserApplication.exe)

**Note:** Latest version of FW will not work properly with old version of X-PHY Application Tool.

## Learn more about X-PHY®

---

X-PHY® AI Embedded Cyber Secure SSD | The Last Line of Defense



[x-phy.com](https://x-phy.com)



[+65-6493 5035](tel:+6564935035)



[flexxon@flexxon.com](mailto:flexxon@flexxon.com)



Follow our social media channels

