



---




X-PHY®

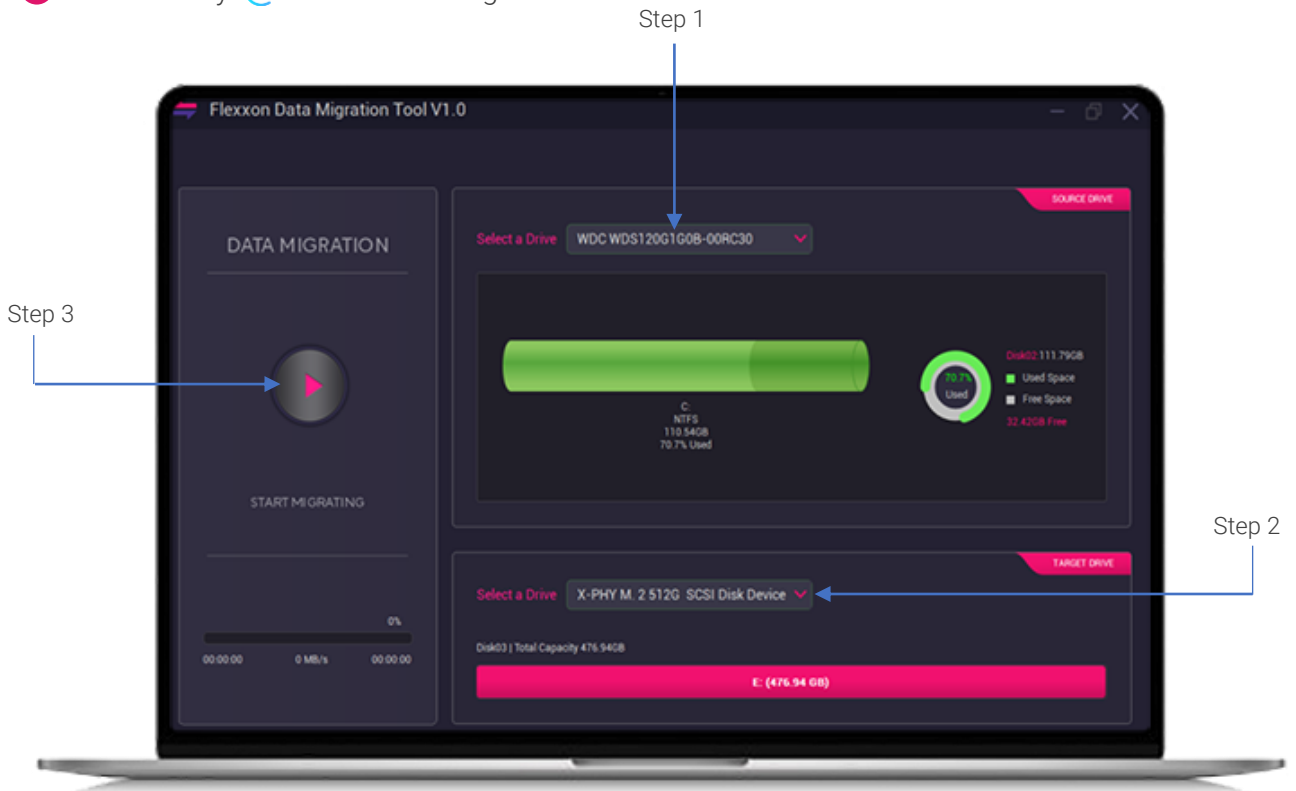
DATA MIGRATION TOOL

**User Guide**

# X-PHY® Data Migration Tool

X-PHY® data migration tool requires X-PHY® SSD to be connected via PCIe slot or USB adapter.

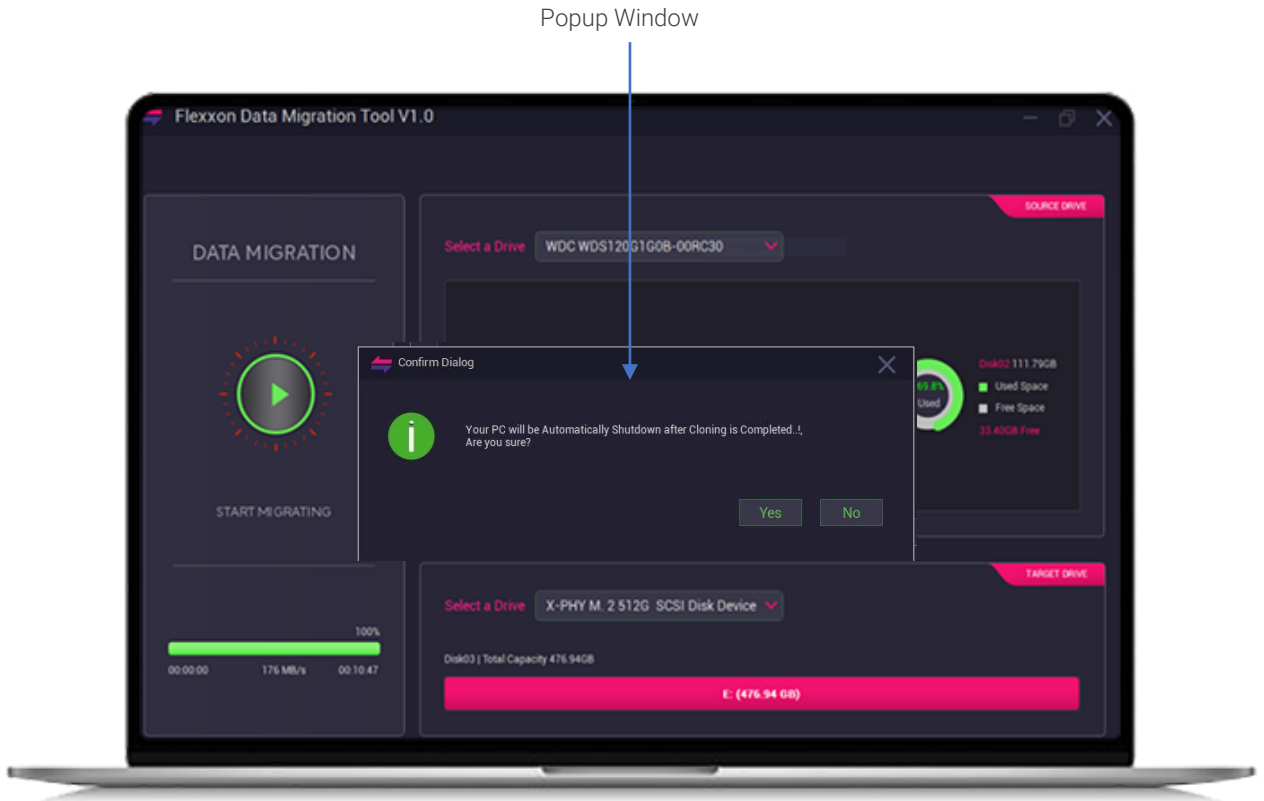
- 1 Select Source  Drive
- 2 Select Target  Drive
- 3 Press "Play"  to start data migration



- 4 A message window will pop. Click "Yes"  if you agree to proceed.



- 5 A notification will pop up to notify that the PC will automatically shut down once the cloning is completed. Click "Yes" to proceed to complete the process.



## Learn more about X-PHY®

---

X-PHY® AI Embedded Cyber Secure SSD | The Last Line of Defense



[x-phy.com](https://x-phy.com)



[+65-6493 5035](tel:+6564935035)



[flexxon@flexxon.com](mailto:flexxon@flexxon.com)



Follow our social media channels

